

# Unique Opportunities in Japan for Distressed Investors

Exhibits to Article in KWR International Advisor  
Newsletter

By

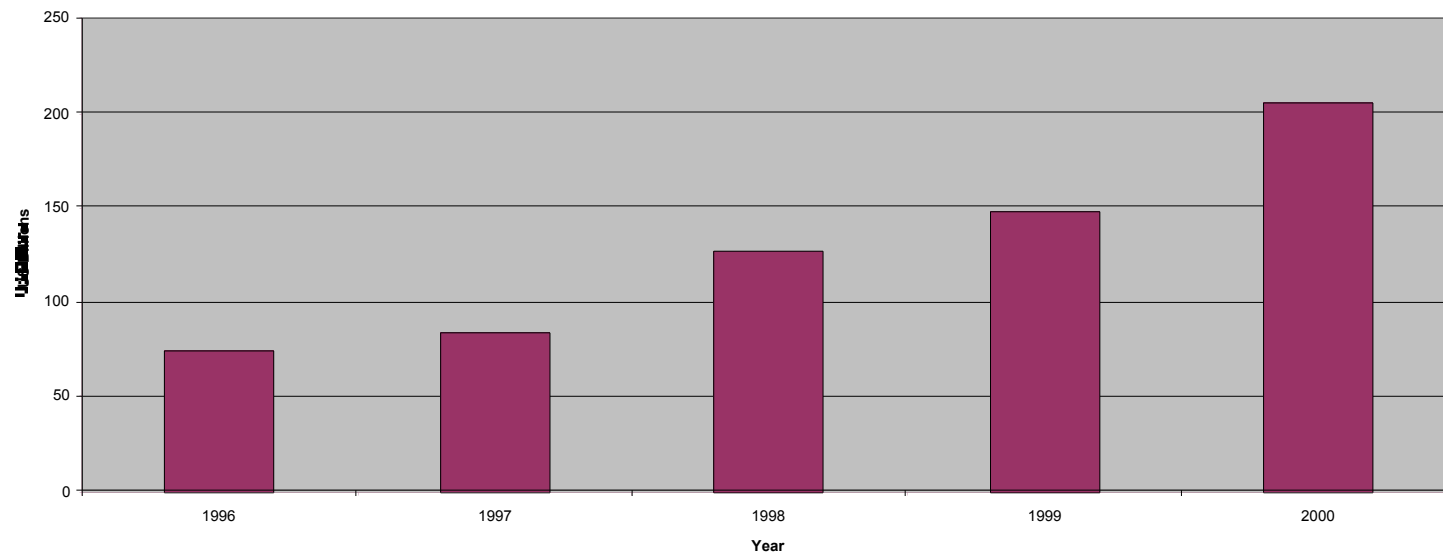
Wilbur L. Ross, Jr.

Chairman & CEO WL Ross & Co.

June 2001



### Amount of Bankruptcy Liabilities in Japan

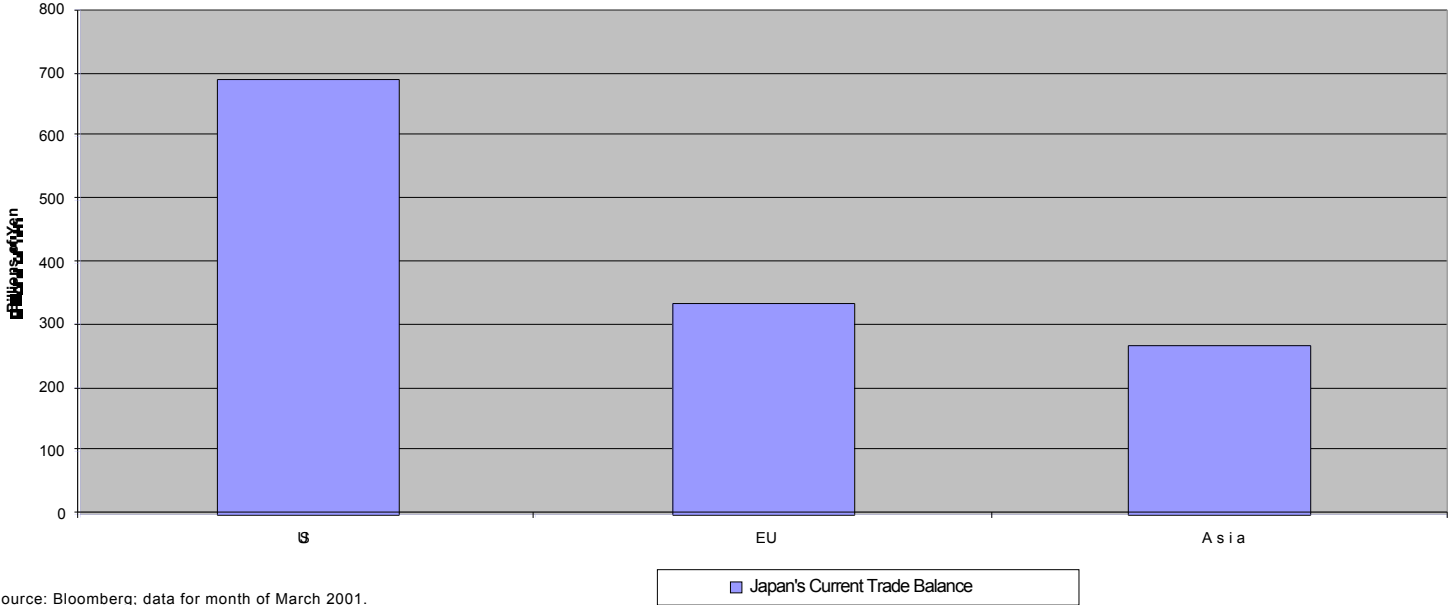


Source: TEIKOKU DATABANK, LTD. Fiscal Year amounts ending in Japan March 31; Yearly March exchange rate.

■ Japan Liabilities



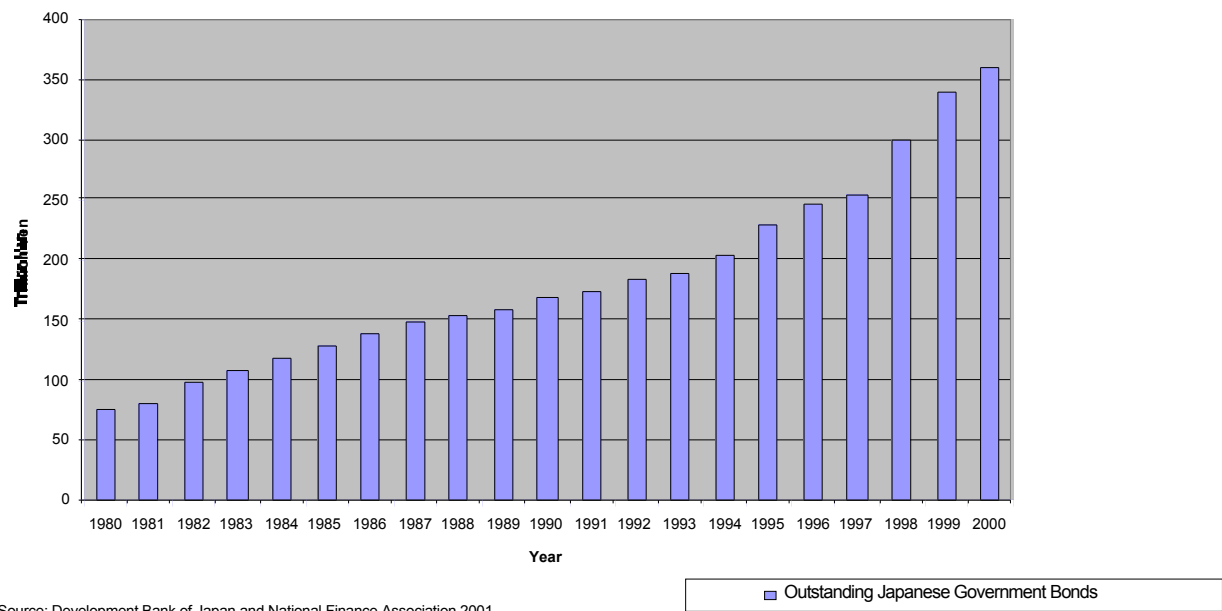
### Japan's Current Trade Balance



Source: Bloomberg; data for month of March 2001.

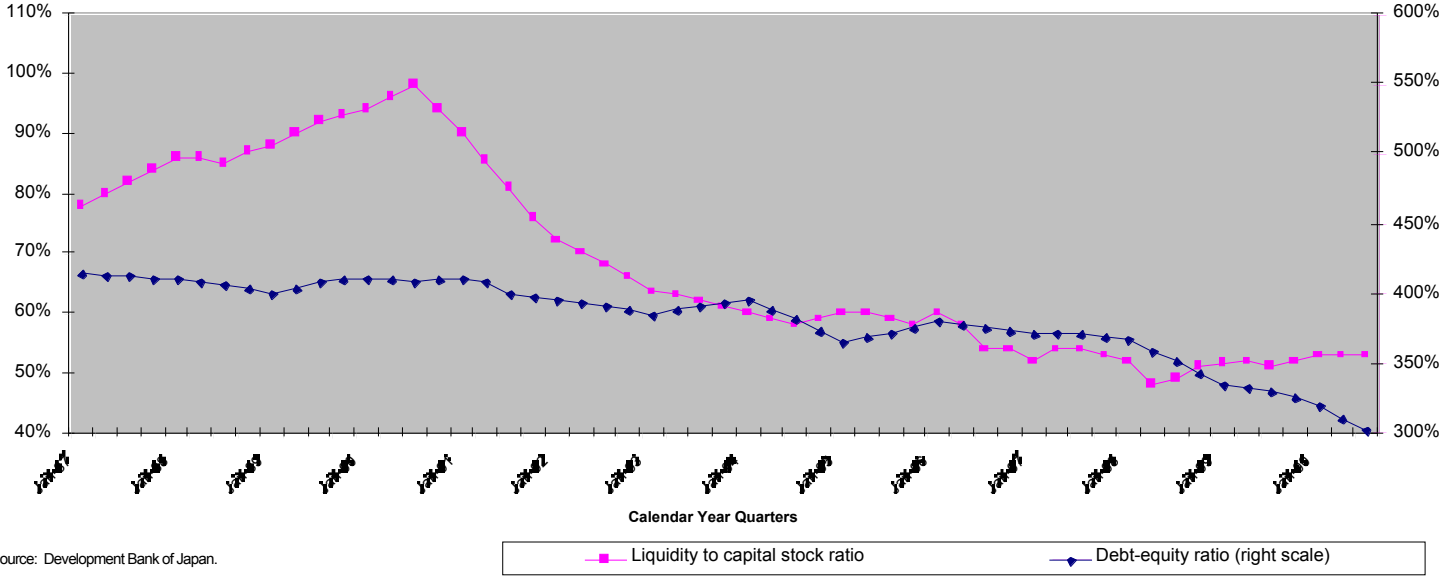


### Outstanding Japanese Government Bonds



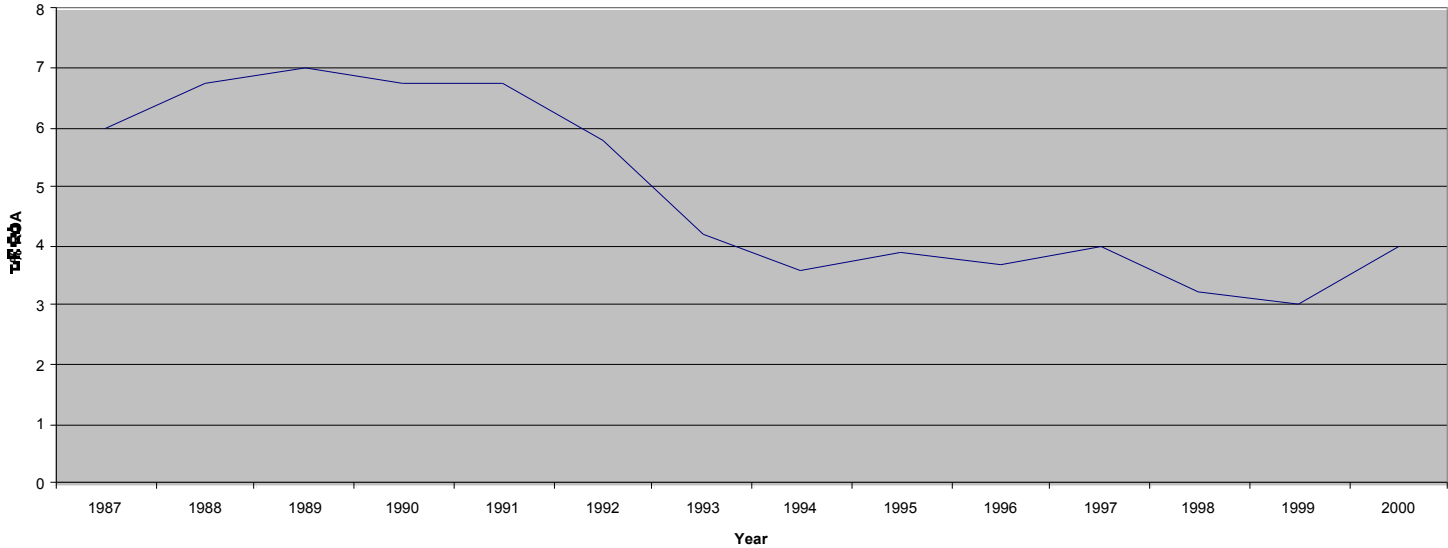


### Corporate Balance Sheet Changes





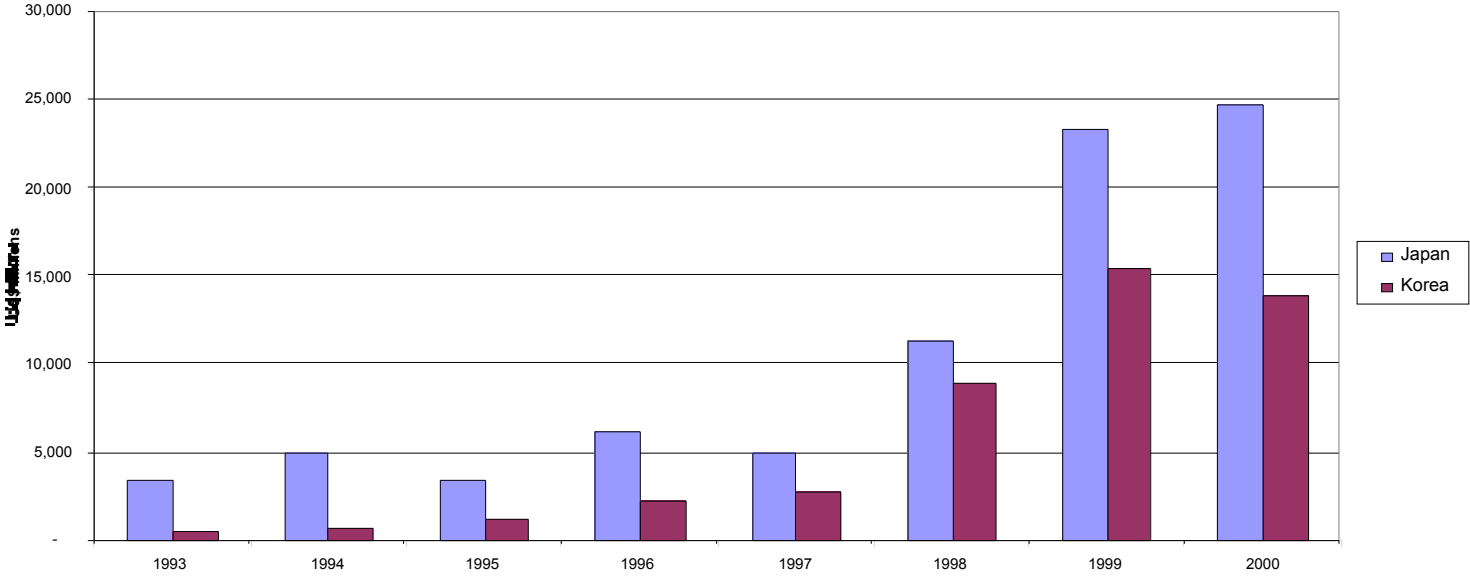
### Japan Return on Assets (ROA)



Source: Ministry of Finance.

Japan ROA

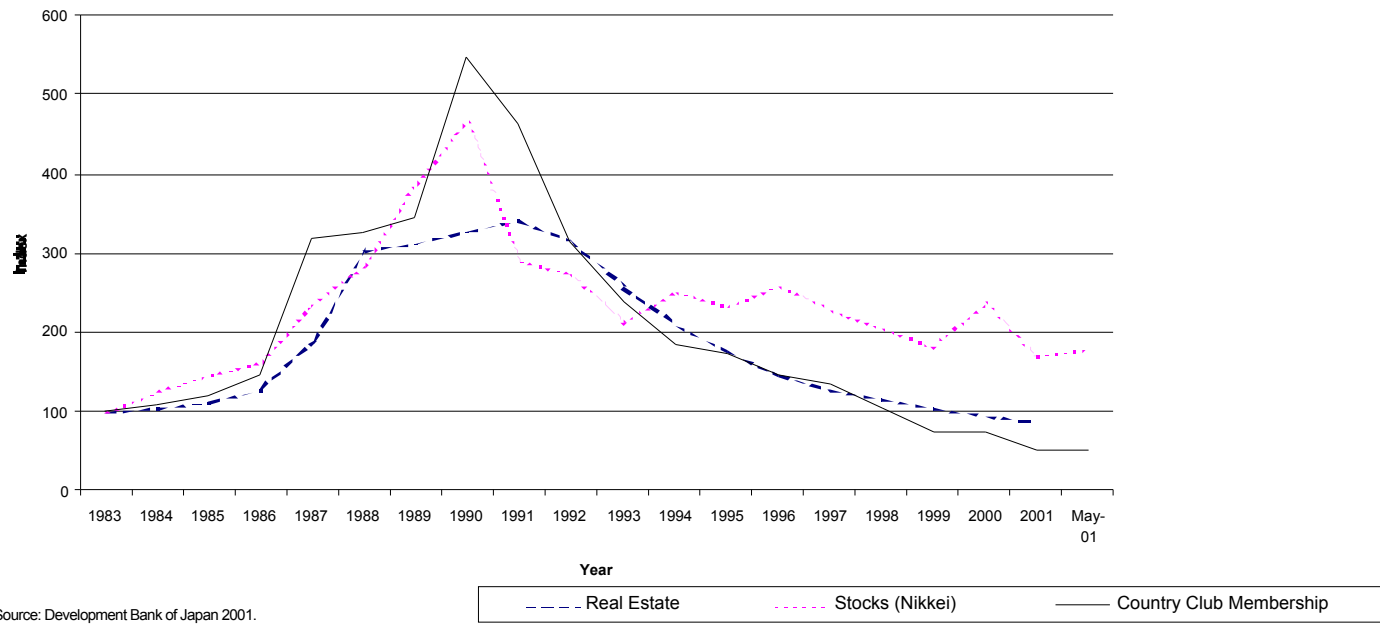
Exhibit 6



Source: Source: Japan Ministry of Finance, Fiscal year in Japan ends March 31 of the following year.



### Real Estate, Stock and Country Club Membership Prices in Japan







### Long-term Trends in Household Total Assets

